

Appendix 1:

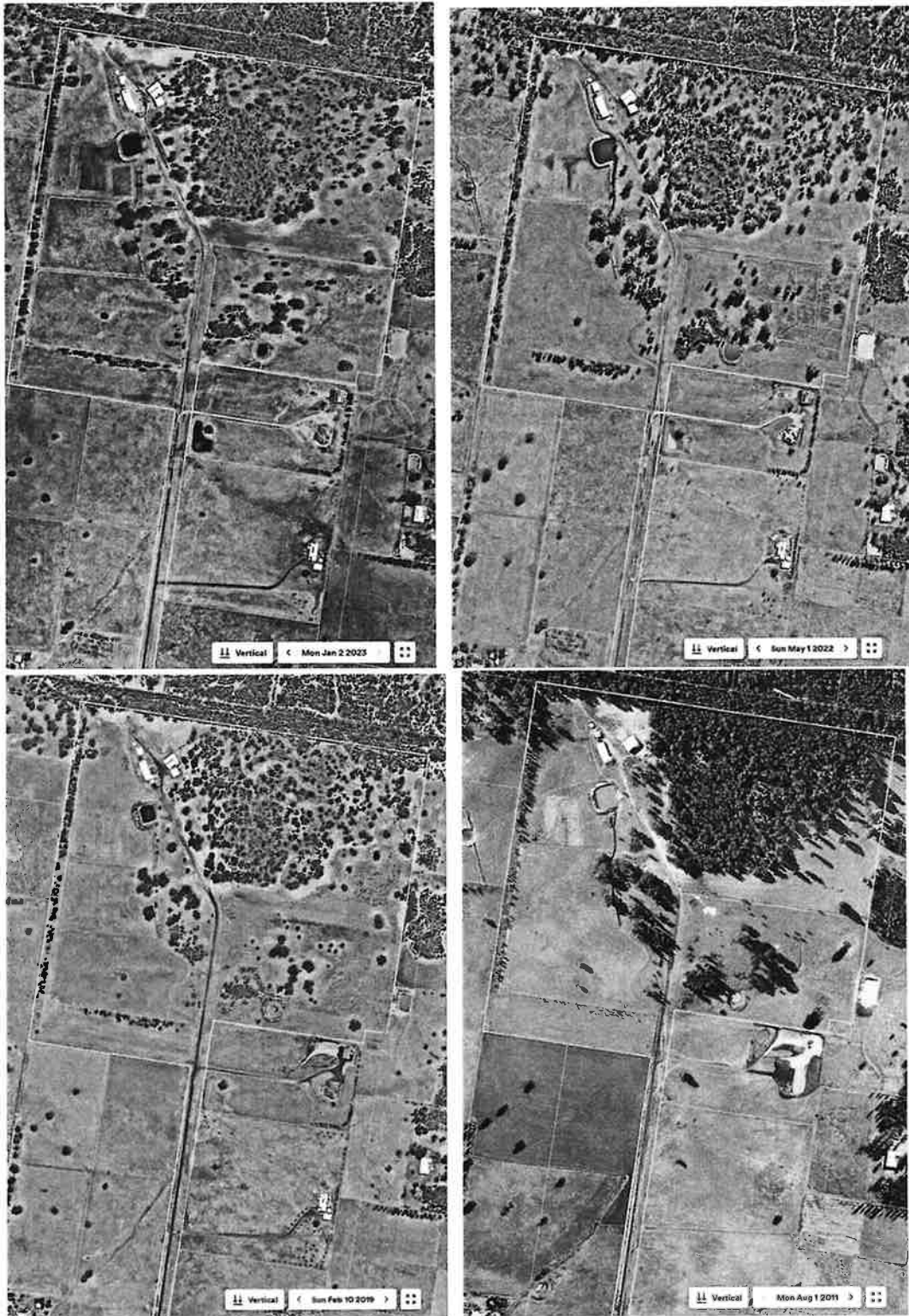
Preliminary Ecological Constraints Assessment (Umwelt Australia Pty Ltd)

Preliminary Ecological Constraints

This constraints assessment has been prepared using available online datasets including state-wide vegetation mapping and threatened species mapping as well as recent and historic aerial imagery obtained through Nearmap.

Vegetation

State-wide vegetation mapping identifies three Plant Community Types (PCTs) occurring within the site (refer to Figure 1 below).



Although the grasslands to the east of the access road have been mapped as PCT 511 - Queensland

Bluegrass - Redleg Grass - Rats Tail Grass - spear grass - panic grass derived grassland of the Nandewar Bioregion and Brigalow Belt South Bioregion, the imagery shows this area to have also been routinely managed and generally consistent with the grasslands in the west of the site which have not been mapped as native vegetation. As such, it is likely that all grasslands on site are of similar, likely poor, condition and not representative of any currently listed PCTs.

Scientific Name	Common Name	NSW Status	Number of Records in 10km
<i>Chalinolobus picatus</i>	Little pied bat	V	1
<i>Chthonicola sagittata</i>	Speckled warbler	V	3
<i>Circus assimilis</i>	Spotted harrier	V	5
<i>Climacteris picumnus victoriae</i>	Brown treecreeper	V	3
<i>Daphoenositta chrysoptera</i>	Varied sittella	V	2
<i>Epthianura albifrons</i>	White-fronted chat	V	1
<i>Falco subniger</i>	Black falcon	V	3
<i>Hieraaetus morphnoides</i>	Little eagle	V	4
<i>Hirundapus caudacutus</i>	White-throated needletail	V	1
<i>Lophoictinia isura</i>	Square-tailed kite	V	1
<i>Miniopterus orianae oceanensis</i>	Large bentwing-bat	V	2
<i>Ninox connivens</i>	Barking owl	V	5
<i>Nyctophilus corbeni</i>	Corbens long-eared bat	V	1
<i>Petaurus norfolcensis</i>	Squirrel glider	V	2
<i>Petroica boodang</i>	Scarlet robin	V	2
<i>Petroica phoenicea</i>	Flame robin	V	1
<i>Phascolarctos cinereus</i>	Koala	E	3
<i>Polytelis swainsonii</i>	Superb Parrot	V	6
<i>Pomatostomus temporalis temporalis</i>	Grey-crowned babbler	V	53
<i>Pteropus poliocephalus</i>	Grey-headed flying fox	V	1
<i>Rostratula australis</i>	Australian painted snipe	V	2
<i>Saccolaimus flaviventris</i>	Yellow-bellied sheath-tail-bat	V	2

V = Vulnerable, E = Endangered, CE = Critically Endangered

Without surveys being completed and based on the history of management and likely exotic composition of the grasslands within the site, it is reasonable to conclude that the grasslands within the site provide low value for threatened species and, other than pine donkey orchid (*Diuris tricolor*), unlikely to provide any habitat value for threatened species known from the area. The avoidance and retention of timbered vegetation would constitute a favourable outcome for biodiversity and result in the maintenance of current biodiversity values of the site.

Preliminary Outcomes and Recommendations

Subject to further field investigations, the primary ecological constraints associated with the proposed subdivision relate to the potential impacts of the remnant timbered vegetation. Should these areas be avoided, impacts to biodiversity would likely to be low and, pending the development of an appropriate subdivision design that could locate services, roads and